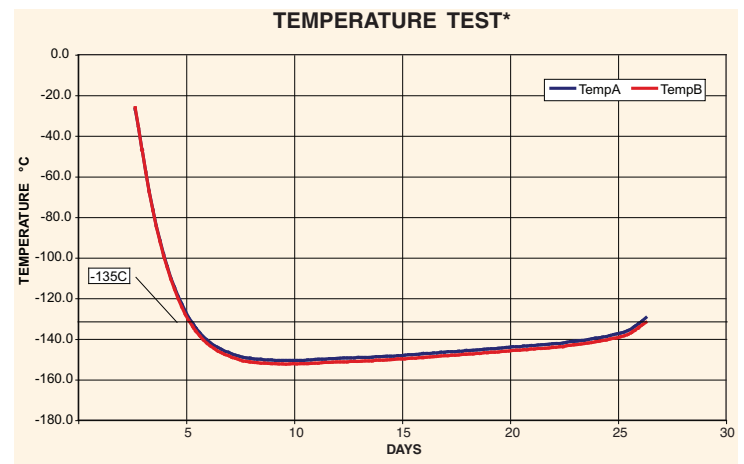




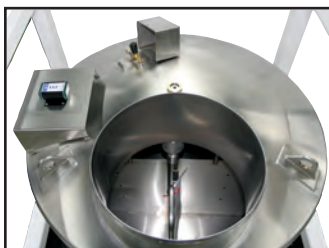
The MVE 1536PD Dry Shipper is specifically designed to provide you with peace of mind when shipping and/or relocating samples.

Features:

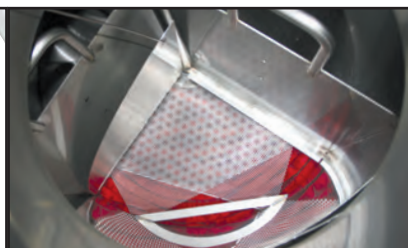
- Liquid Nitrogen absorbent can be charged for dry shipment
- Hold time up to 20 days when properly charged
- Rigid steel frame can be moved with pallet jack/forklift
- Sized to fit in a wide-body aircraft
- Inventory tray locks to prevent rotation during transit
- Locking lid
- Includes data logger to monitor and record sample temperature during shipment or relocation
- Inner vessel may be decontaminated after shipping if necessary.



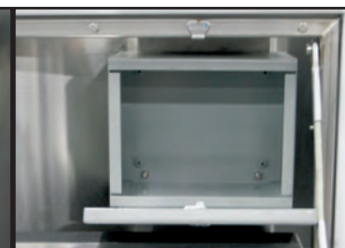
* Temp Test indicates typical performance of MVE 1536PD freezer with full inventory system and factory recommended level settings. Actual performance may vary with atmospheric conditions and usage.



Top View



Cabosil Under Tray



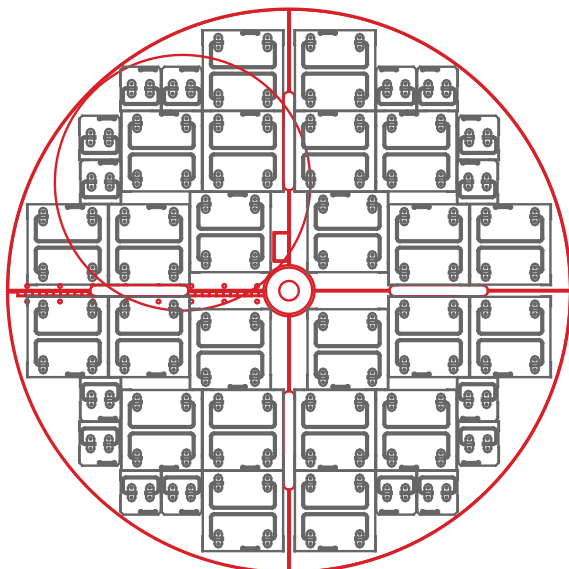
Locking Cabinet



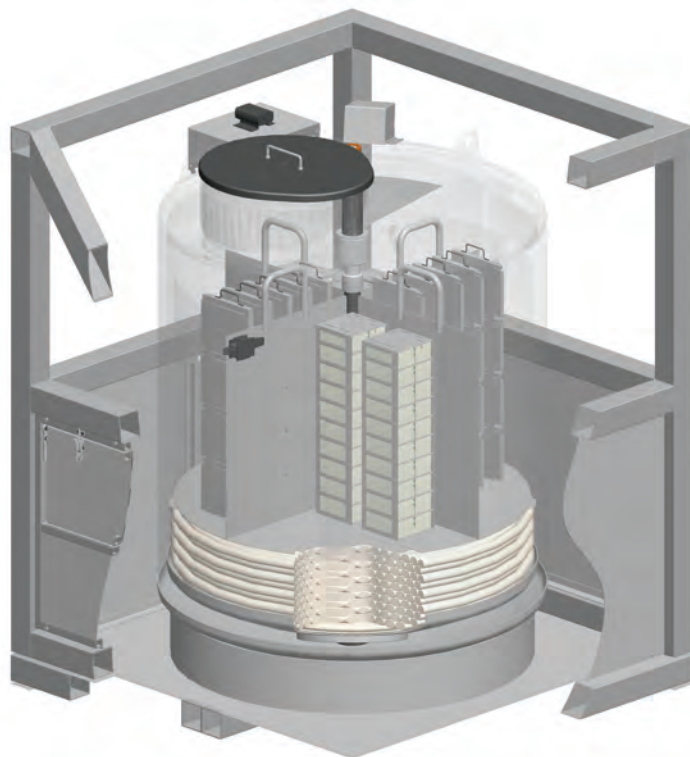
Data Logger

Rack Layout

MVE 1536PD Dry Shipper



2 4, 1 3 -2 Large Racks
 1 6, 1 3 -2 Mini Racks
 3 6,4 0 0 Vials



MVE 1536PD

Maximum Storage Capacity

1.2 & 2 mL Vials (Internally Threaded)	3 64 0 0
Number of Racks 100 cell boxes	2 4
Number of Racks 25 cell boxes	1 6
Number of Stages per Rack	1 3

Performance

Absorbed LN2 Capacity L	1 3 3
-------------------------	-------

Unit Dimensions

Neck Opening in. (mm)	1 7.5 (444)
Usable Internal Height in. (mm)	3 0 (762)
Inner Diameter in. (mm)	3 8.5 (978)
Overall Height, including Frame in. (mm)	64 (1 62 5)
Liftover Height in. (mm)	42 .1 (1 0 7 0)
Footprint in. (mm)	5 2 X 5 2 (1 3 2 1 X 1 3 2 1)
Step Height in. (mm)	2 0 .5 (5 2 1)
Depth of Fold Down Step in. (mm)	1 0 .8 (2 7 4)
Weight Empty lb. (kg)	1 6 0 0 (7 2 6)
Weight Full lb. (kg)	2 0 4 4 (9 2 7)

TWO Year Standard Warranty • THREE Year Vacuum Warranty



www.chartbiomed.com

MVE, BioMedical Group
 2200 Airport Industrial Dr., Ste. 500
 Ball Ground, GA 30107
 Ph 770-721-7759 • Toll Free 1-800-482-2473
 Fax 770-721-7758

Chart BioMedical Ltd.
 Unit 2, Maxdata Centre
 Downmill Road, Bracknell
 Berks RG12 1QS, United Kingdom
 Ph +44(0) 1344 403100 • Fax +44(0) 1344 429224