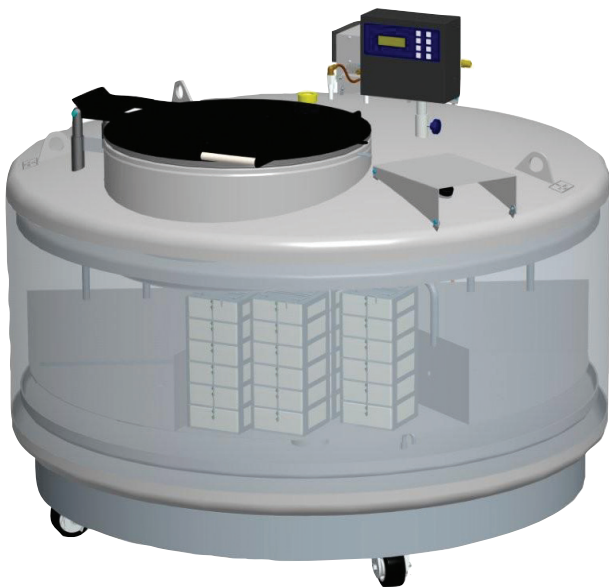


MVE Stock Series

The MVE Stock Series provides the ultimate in security for the breeding industry and are primarily used to store semen and embryos. The freezers are designed for pull and pack shipment, with a wide neck opening for easy access. Although engineered for full liquid storage, the MVE Stock Series can be operated in vapor using the available vapor storage accessory packs.

Features include:

- Wide neck opening
- Lowest liftover height
- Largest LN2 capacity

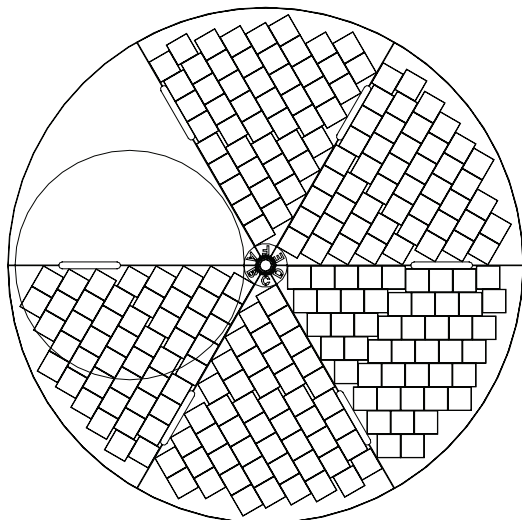


Visit www.chartbiomed.com for more information.

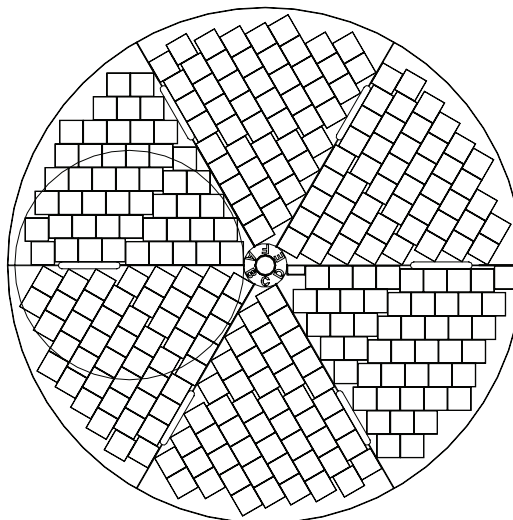
Chart Inc. reserves the right to discontinue its products, or change the prices, materials, equipment, quality, descriptions, specifications and/or processes to its products at any time without prior notice and with no further obligation or consequence. All rights not expressly stated herein are reserved by us, as applicable.

Rack Layouts

1877P-2T-150



TOP TIER CAPACITY
245 BOXES



BOTTOM TIER CAPACITY
294 BOXES

MVE	MVE	MVE	MVE	MVE	MVE
103	808	816P-2T-190	1318	1842P-150	1877P-2T-150

Maximum Storage Capacity

1.2 & 2 ml Vials

(Internally Threaded)	-	11,700	10,500	20,800	-	-
Number of Racks 100 cell boxes	-	12	105	24	-	-
Number of Racks 25 cell boxes	-	4	-	8	-	-
Total Number of Racks	-	16	21	32	-	-
High Security Straw Capacity (0.5 ml)	7,728	37,296	31,584	76,104	-	347,424
Number of Canisters (73 mm)	23	74	94	151	-	517
Goblets/Canister : Straws/Goblet	2:168	3:168	2:168	3:168	2:168	4:168
Number of SUC-1 canisters (2.5"x2.5"x11)	22	61	115	129	294	539
Number of 1.2 ml vials on canes	3,168	8,784	16,560	18,576	42,336	77,616
Number of 2.0 ml vials on canes	1,760	4,880	9,200	10,320	23,520	43,120
Number of 1/2 cc straws 10/cane	6,820	18,910	35,650	39,990	91,140	167,090

Performance

LN2 Capacity L	39	230	381	482	915	1400
----------------	----	-----	-----	-----	-----	------

Unit Dimensions

Neck Opening <i>in. (mm)</i>	16.0 (406)	25.0 (634)	12.5 (317)	35.5 (901)	25.0 (635)	25.0 (635)
Usable Internal Height <i>in. (mm)</i>	12.0 (305)	22.0 (558)	13.0 (330) per level	18.8 (479)	13.0 (332)	13.0 (330) per tray
Inner Diameter <i>in. (mm)</i>	16.00 (406)	28.30 (720)	28.70 (728) top tray 27.70 (702) bottom	39.60 (1007)	56.25 (1429)	56.25 (1429)
Overall Height <i>in. (mm)</i>	16.4 (415)	42.8 (1088)	50.0 (1271)	47.0 (1193)	44.3 (1127)	58.2 (1479)
Door Width						
Requirement** <i>in. (mm)</i>	18 (457)	31 (787)	32 (813)	42 (1067)	60 (1524)	60 (1524)
Weight Empty <i>lb. (kg)</i>	48 (22)	250 (114)	475 (215) est.	469 (213)	1167 (530)	1600 (726)
Weight Liquid Full* <i>lb. (kg)</i>	117 (53)	660 (300)	1155 (524) est.	1328 (602)	2798 (1270)	4094 (1857)

TWO Year Standard Warranty • FIVE Year Vacuum Warranty

Conforms to MDD 93/42/EEC, the Medical Device Directive for the EU. Freezer systems UL/C-UL Listed.

* Without inventory

**Minimum width required for vessel to pass through opening. Footprint may vary. Contact Tech Service for detailed drawings.